



**MELZI**  
edilizia e restauro

## **FLOORING SYSTEMS: Decorative effects**



## **DECORATIVE EFFECTS**

The decorative effects that can be realised with thick coatings are numerous in terms of product type, aesthetic effect and thickness. The following indications are therefore only examples, each decorator can create original ones according to his own experience.

All the types described below are intended for living spaces with pedestrian traffic only.

The preparation methods of the substrates vary according to their nature, to evaluate the most suitable cycles refer to the indications in the "Flooring Products Guide".

In general, for thicknesses greater than 2 mm, it is necessary to reinforce the thickness with a net (thermal insulation net); when working with epoxy systems, net is needed from 1.5 mm thickness. Net must always be used when treating ceramic substrates (tiles)

When working with glossy casting epoxy resins (e.g. to encapsulate small objects), take particular care with the conditions in the laying environment, high humidity and the presence of dust can cause undesirable surface effects.

For cement coatings, cement/quartz/lattice mortars are used (to increase mechanical strength use cement 42.5 N/mm<sup>2</sup>). It is possible to mix white and grey cement in order to obtain different shades; for colouring, the mortar is prepared with white cement and water-based colouring pastes are used; the presence of cement means a certain approximation in the final shade compared to other mass-coloured systems.

All decorative effects require the final application of a protective varnish in at least two coats; in special conditions of use (shower cubicles, heavily trafficked rooms, kitchens, etc.), a third coat should be applied. For effects requiring small objects to be fixed/embedded (leaves, shells, sand, etc.), use the glossy epoxy system DUALENE EPX LAC.

All surface finishing treatments must be done on completely dried coatings (with epoxy products consider max. over-application times).



## **DECORATIVE EFFECTS: Cementitious trowel**

The mortar is applied in two layers using a metal trowel; if the layer tends to peel during application, moisten it with spray water and rework it.

The first completely dried layer is insulated by applying a coat of latex diluted in water 1:1, when the insulation is dry the second one is applied.

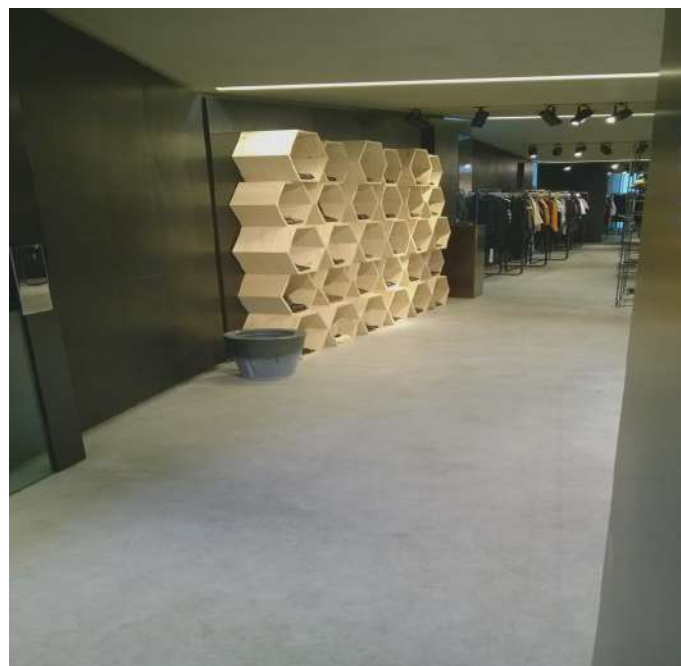
The final dry layer is sanded (180-200 sanding paper), until a smooth surface is obtained; for a sanding effect, the trowel is used, if metallic the surface shows dark streaks, to reduce the effect use a plastic trowel; the intensity of the streaks can be reduced by further light sanding.

Remove all dusty residues before treating with varnishes or protective resins. For colouring, water-based colouring pastes are used, to be added when mixing the components of the coating (the quantity varies depending on the concentration of the pastes, on average 5-8% by weight); the presence of cement (white) means that the final shade is somewhat approximate compared to other mass-coloured systems.

### **SPATULED EFFECT (max. total thickness 3 mm)**

		<b>Mixture yeld (2 layers)</b>	<b>Product yeld</b>
<b>DUALENE LIC SL</b>	<b>170</b>		
<b>Quartz 006-01</b>	<b>500</b>	<b>1,6 kg/m<sup>2</sup></b>	<b>0,3 kg/m<sup>2</sup></b>
<b>Concrete</b>	<b>330</b>		

to increase the mechanical strength of the mortar use concrete 42.5 N/mm



## **DECORATIVE EFFECTS : Epoxy trowel**

The mix is applied in one or more layers by metallic trowel, smoothing the fresh product to obtain a homogeneous surface; subsequent layers must be spread over the previous dry one, in any case within max. 24 h.

The grain size of the quartz used determines the final appearance of the finish, which is more textured with larger dimensions (no more than 03 mm). If the system is to be used on vertical surfaces, do not dilute with water and add 3-4% by weight of paper pulp type ARBOCEL BWW 40.

### **TROWEL EFFECT**

		<b>Mixture yeld</b>	<b>Product yeld</b>
<b>DUALENE EPX SL</b>	<b>1000</b>		
<b>Quartz 006-01 / 01-03</b>	<b>1000</b>	<b>0,6-0,7 kg/m<sup>2</sup>/per layer</b>	<b>0,35 kg/mq</b>
<b>water</b>	<b>120-150</b>		



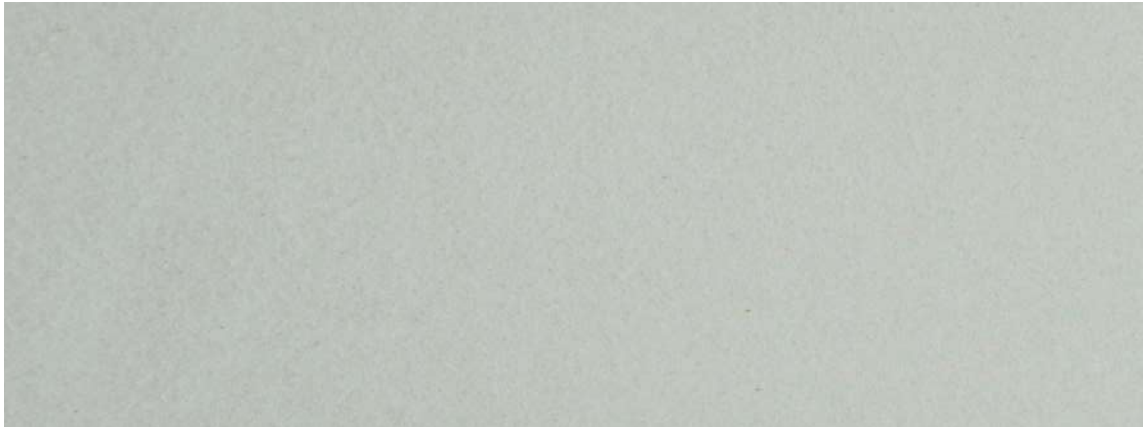
## **EFFETTI DECORATIVI**

### **Trowel: aspect**

After the final layer is completely dry, trowel coats can be given different aesthetic appearance.

#### **UNIFORM EFFECT**

It is achieved by sanding the surface (180-200 paper)



#### **BLADED EFFECT.**

It is obtained by passing the surface with a metal trowel. If the effect obtained is too intense, it can be reduced by sanding down to the required intensity



## **EFFETTI DECORATIVI**

### **Trowel: protection**

Decorative troweled effects must always be protected. In case they have been sanded all residues should be removed.

**DUALENE AIC TRA SW** two-component water-based polyurethane varnish is used for protection; it is available in matte/satin/glossy versions; the glossy version has less dirt pick-up.

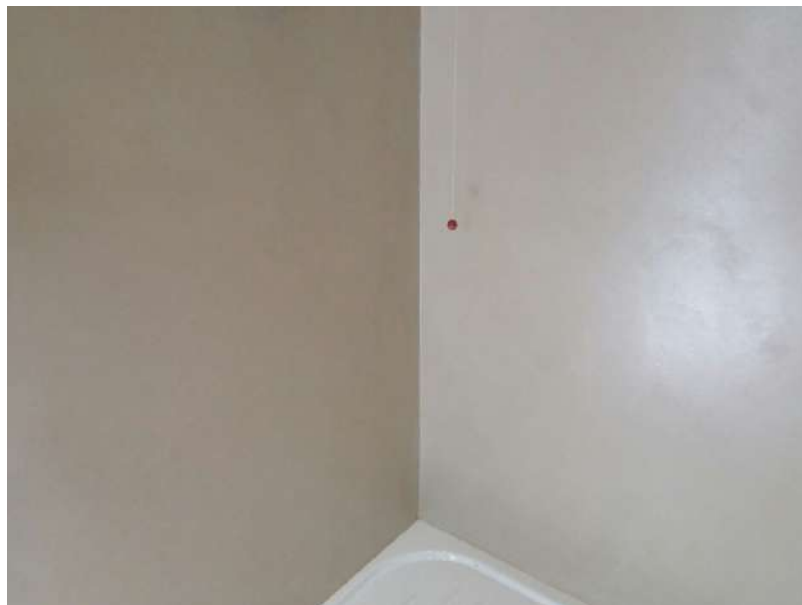
Always apply 2 coats of the product; a third coat should be applied in environments with direct contact with water (bathrooms, shower boxes), with heavy foot traffic (public environments).

The product is ready to use, under special conditions (climatic, absorption), dilute the first one with max. 5-10% water, the final coat always apply it without dilution.

For cleaning surfaces protected with the varnish, use non-aggressive detergents, always checking first on a defiladed portion for effectiveness and absence of alterations.

#### **Protective varnish**

		<b>Dilution</b>	<b>Product yield (2 coats)</b>
<b>DUALENE AIC TRA SW</b>	water	Ready to use	5 m <sup>2</sup> /L



## **DECORATIVE EFFECTS: Casting**

The solventless epoxy system DUALENE EPX LAC is used to obtain a glossy surface layer. It can be used on its own directly on the substrate (assess the most suitable preliminary preparation), also to incorporate small objects (leaves, shells, etc.); it can also be used as a protective-decorative layer of previous coatings, in this case working with the correct overlapping timing. When using it, particular attention must be given to the conditions of the working environment in order to prevent dusty parts or other foreign bodies from falling into the coating, thus altering its appearance. The high gloss may be reduced in conditions of strong localised flow, in which case the overcoating of a protective varnish should be considered.

	Dilution	Product yield
<b>CASTING</b>		
<b>DUALENE EPX LAC</b>	Ready to use	1,3 kg/m <sup>2</sup> /mm thickness

